

Виолончель

СВЕТЛАЯ, КРИСТАЛЬНАЯ И ЧИСТАЯ

А. Рыжов

П. Шевченко

Аранжировка Д. Шевернёва

Обработка Н. Богданова

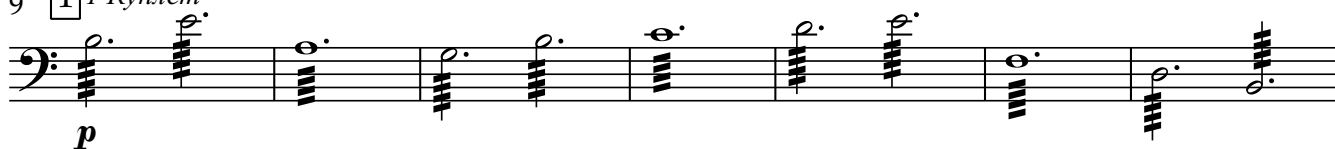
Andante ♩ = 66



4

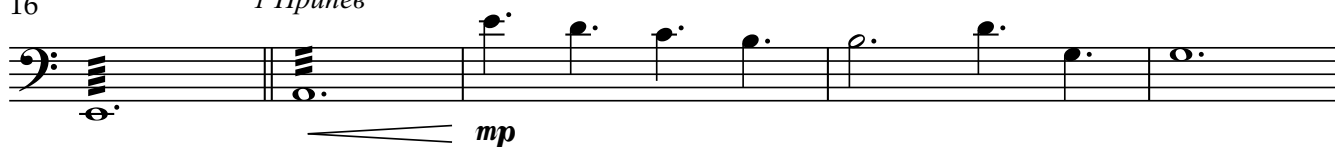


9 1 1 Куплет



16

1 Присев



21



26 2 2 Куплет



30



34 2 Присев



The bass line of 'The Rose Tree' is written on a single staff. It begins with a treble clef and a key signature of one sharp (F#). The melody consists of a series of eighth and sixteenth notes, with a final measure containing a double bar line. The notation includes various musical symbols such as stems, beams, and accidentals.

The bass line of 'The Rose Tree' is written on a single staff. It begins with a treble clef and a key signature of one sharp (F#). The melody consists of eighth and sixteenth notes, with some measures containing triplets. The final measure of the line is a whole note G4.

56

Musical notation for the bass line of 'The Rose Tree'. The melody is written on a single staff in bass clef. It begins with a half note G2, followed by a half note F2, then a half note E2. The next measure contains a half note D2, a half note C2, and a half note B1. The final measure consists of a half note A1, a half note G1, and a half note F1. The piece concludes with a final half note E1.

Musical notation for the bass line of 'The Rose Tree'. The notation is on a single staff with a bass clef. It begins with a treble clef and a key signature of one flat (B-flat). The melody starts with a half note G2, followed by a quarter note F2, and a quarter rest. After a double bar line, the key signature changes to two flats (B-flat and E-flat). The melody continues with a half note G2, followed by a quarter note F2, and a quarter note E2. The piece concludes with a half note D2, followed by a quarter note C2, and a quarter note B1. The word 'cresc.' is written below the staff, indicating a crescendo. There are also two 'V' shaped markings below the staff, one at the beginning and one at the end.

The musical notation for the bass staff shows a sequence of notes: G2 (half note), F#2 (quarter note), E2 (quarter note), D2 (quarter note), C2 (quarter note), B1 (quarter note), A1 (quarter note), and G1 (half note). The key signature has two flats (B-flat and E-flat), and the time signature is common time (C).

rit.

accel. rall.

poco a poco dim.